



GLACIER Panels/
DONN FINELINE DXFF Suspension System

Features and Benefits

- Heavily textured cast product with durable surface that resists scrapes commonly caused by accessing the ceiling plenum.
- Zero VOC emissions exceeds CA Specification 01350.
- USDA Certified Biobased Product?
- Combine 12"x12" tile with the DONN® brand DX®/DXL™ concealed suspension system to create a monolithic ceiling surface.
- Integral color masks nicks and scratches and enhances lifelong panel appearance.
- Optional FIRECODE® product designed to meet life-safety codes.

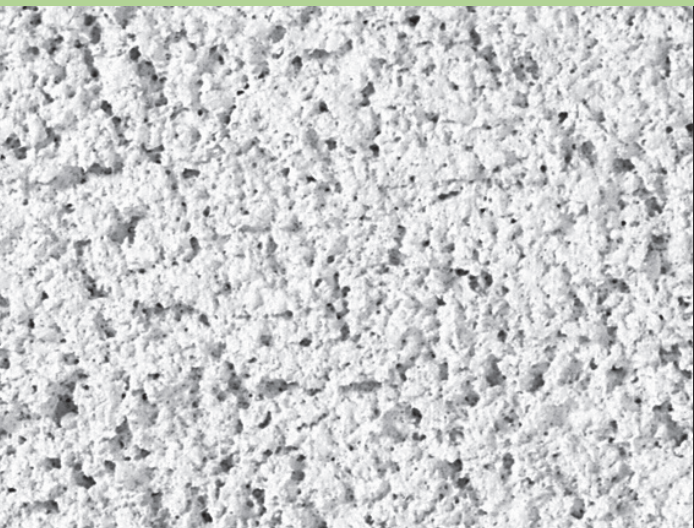
Applications

- Food courts
- Hospitality
- Libraries
- Restaurants

Substrate

- Cast mineral fiber

See LEED report tool at usgdesignstudio.com for detailed sustainability information.



Heavy-Textured Panel

To order samples, go to usg.com

Standard Colors



Flat White
050



Parchment 103



Manila 246



Beige 142



Straw 143



Sandstone 090



Taupe 107



Charcoal 534



Flat Black 205



Silverstone 052



Mist 053

Advantage Colors



Breeze 2659



Blue Grey 564



Azure 2660



Slate 568



Spruce 567



Tuscany 2663



Sorbet 2658



Squash 2662



Safari 2662



Redwood 566



Sienna 565



Halo 206



Nectar 546



Quartz 082

UL Classified													
	Edge	Panel Size	Class	Item No.	NRC	CAC Min.	LR ²	Color ³	Grid Options	VOC Emissions	Abuse-Resistant	Recycled Content ¹	Panel Cost
GLACIER™ Panels		2'x2'x3/4"	Class A	707	.65	35	.70	White	A	Zero		69%	\$\$\$
		Paper-Back						Standard Advantage					
		2'x2'x3/4"		715	.65	35	.70	White	A	Zero		70%	\$\$\$
		Paper-Back											
		2'x4'x3/4"	Class A	711	.65	35	.70	White	A	Zero		69%	\$\$\$
		Paper-Back											
		2'x2'x3/4"	Class A	708	.65	35	.70	White	B, C, D, F	Zero		69%	\$\$\$
		Paper-Back						Standard Advantage					
GLACIER Tile ^{4,5,6}		12"x12"x3/4"	Class A	701	.65	25	.70	White	E	Zero		69%	\$\$\$\$
Legend													
Zero Emissions (VOC) Zero-emitting performance exceeds CA Specification 01350 (CA Dept. of Health Services Standard Practice for the testing of VOC emissions) and is listed on the CHPS database. USG Certificate of Compliance for Zero VOC Emissions also available on usg.com.				High Recycled Content Classified as containing greater than 50% total recycled content. Total recycled content is based on product composition of post-consumer and pre-consumer (post-industrial) recycled content per FTC guidelines.				FIRECODE®					
Grid Profile Options													
	A DX®/DXL™ 	B CENTRICITEE™ DXT™ 	C FINELINE® DXF™ 	D FINELINE 1/8 DXFF™ 	E DX/DXL Concealed 	F IDENTITEE™ DXI™ 							
Physical Data/ Footnotes													
Product literature Data sheet: SC1819 ASTM E1264 classification Type III, Form 4, Pattern F ASTM E84 surface burning characteristics Class A Flame spread: 25 Smoke developed: 50 Weight 1.45 lbs./sq. ft. (12"x12" tile) 1.50 lbs./sq. ft. (Class A panels and tile) 1.60 lbs./sq. ft. (FIRECODE® panel) Thermal resistance R-1.7 (Class A) R-1.3 (FIRECODE)				Maximum backloading See USG 30-Year Limited Warranty Commercial Applications SC2102. Maintenance Can be cleaned easily with a soft brush or vacuum. Texture The manufacturing process for cast ceiling panels creates natural, subtle texture variations, which is a distinguishing feature of these products. Because of potential variances between production dates, we recommend ordering and installing cast products by production lot number.				Notes 1. For details, see LEED report tool at usgdesignstudio.com. 2. LR values are shown as averages. 3. See Colors selector for more information. 4. Texture appearance will vary based on ceiling height, installation methods, and natural variation of the product. 5. Contact USG for adhesive recommendation for 12"x12" glue-up applications. 6. Not UL Classified for acoustics. 7. This product has achieved both BioPreferred initiatives: Federal Procurement Preference and Certified Product Labeling. See the complete listing of all USG ceiling panels on biopreferred.gov website.					